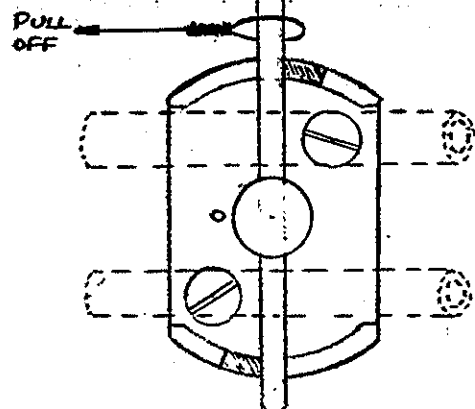


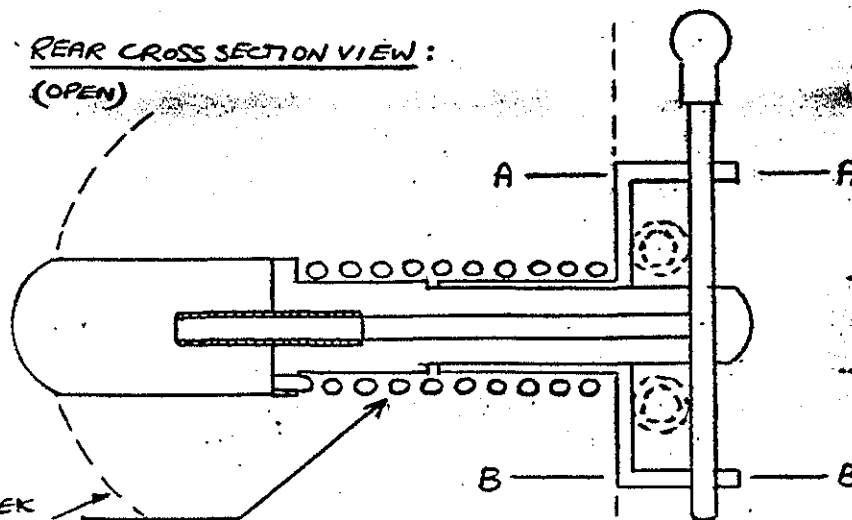
SIDE VIEW:

(CLOSED)



REAR CROSS SECTION VIEW:

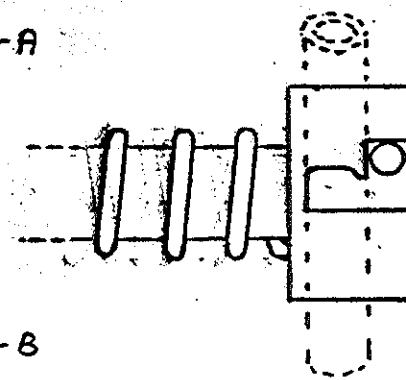
(OPEN)



TOP VIEW A-A:

(OPEN)

(B-B IS MIRROR IMAGE)

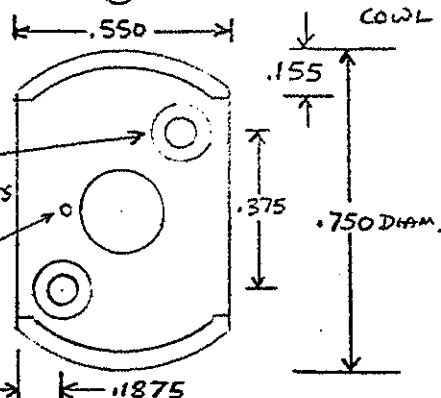


BODY:

(BRASS)

DRILL AND COUNTERSINK FOR 2-56 BOLTS

DRILL #65 FOR SPRING TABS .109 RADIUS



PLUNGER: (STEEL)

.125

.135

.090

.325

.960

.050

.280

.125

.135

.090

.325

.960

.050

.280

.125

.135

.090

.325

.960

.050

.280

.125

.135

.090

.325

.960

.050

.280

.125

.135

.090

.325

.960

.050

.280

.125

.135

.090

.325

.960

.050

.280

.125

.135

.090

.325

.960

.050

.280

.125

.135

.090

.325

.960

.050

.280

.125

.135

.090

.325

.960

.050

.280

.125

.135

.090

.325

.960

.050

.280

.125

.135

.090

.325

.960

.050

.280

.125

.135

.090

.325

.960

.050

.280

.125

.135

.090

.325

.960

.050

.280

.125

.135

.090

.325

.960

.050

.280

.125

.135

.090

.325

.960

.050

.280

.125

.135

.090

.325

.960

.050

.280

.125

.135

.090

.325

.960

.050

.280

.125

.135

.090

.325

.960

.050

.280

.125

.135

.090

.325

.960

.050

.280

.125

.135

.090

.325

.960

.050

.280

.125

.135

.090

.325

.960

.050

.280

.125

.135

.090

.325

.960

.050

.280

.125

.135

.090

.325

.960

.050

.280

.125

.135

.090

.325

.960

.050

.280

.125

.135

.090

.325

.960

.050

.280

.125

.135

.090

.325

.960

.050

.280

.125

.135

.090

.325

.960

.050

.280

.125

.135

.090

.325

.960

.050

.280

.125

.135

.090

.325

.960

.050

.280

.125

.135

.090

.325

.960

.050

.280

.125

.135

.090

.325

.960

.050

.280

.125

.135

.090

.325

.960

.050

.280

.125

.135

.090

.325

.960

.050

.280

.125

.135

.090

.325

.960

.050

.280

.125

.135

.090

.325

.960

.050

.280

.125

.135

.090

.325

.960

.050

.280

.125

.135

.090

.325

.960

.050

.280

.125

.135

.090

.325

.960

.050

.280

.125

.135

.090

.325

.960

.050

.280

.125

.135

.090

.325

.960

.050

.280

.125

.135

.090

.325

.960

.050